









Sniffer4D Mini2

For DJI Matrice 350/300, Matrice 30 Series, Mavic 3 Enterprise Series

A Multi-gas Detection & Mapping System for DJI M300/M350, M30 Series, M3E/T Series

Sniffer4D Mini2 consists of a compact yet powerful multi-gas detection hardware, and user-friendly analytic software. This system can measure and visualize real-time 3D gas concentration distributions. By providing timely & actionable information, Sniffer4D Mini2 helps first responders, oil & gas industry, environmental protection agencies, and researchers improve efficiency, mitigate risks, and reduce costs.

 <p>Compact body 102x103x72mm</p>	 <p>Ultra lightweight 250-300g</p>	 <p>Active air intake</p>	 <p>Built-in 3G/EDGE/GPRS</p>	 <p>Data retrieval algorithm</p>	 <p>SD card data storage</p>
--	---	--	--	---	---

Sense Up to 9 Gases at a Time

Sniffer4D is able to obtain up to 9 gas concentration distributions at one time. Users can flexibly choose or alter their sensor configurations that suit their applications and budgets.

Examples:

- PM2.5, PM10, O3, NO2, CO, SO2, TVOC, Odor (OU) for ambient air monitoring;
- TVOC, CH4, CO, Cl2, O2, NO2, H2S, CO2 for HAZMAT response;
- TVOC, CH4, H2S, SO2 for oil & gas plant leak detection.

Available Parameters

PM2.5 | PM10 | SO2 | CO | NO2 | O3 | TVOC | LEL | CH4 | CO2 | HF | H2S | NH3 | HCl | H2 | Cl2 | PH3 | NO | HCN | Odor (OU) | HCHO

Seamless Integration with DJI M350/M300, M30 Series, M3E/3T Series Aircrafts

Sniffer4D Mini2's all-new industrial and structural designs bring significant reduction in its size and weight, maximizing aircraft's flight time. The new quick-release mount and cable connection, shorten the operation preparation time even further.



More Functionalities

Sniffer4D Mini2 supports connecting to a functional expansion bay that allows connecting up to 4 externally-mounted modules, helping users expand their applications for various needs.



Status LEDs

The 6 status LEDs enable users to quickly understand Sniffer4D Mini2's working status, boosting your work efficiency.



Warning Lights

The 3 warning lights on Sniffer4D Mini2 have larger visible angle. They change color under different gas concentrations, notifying nearby people about the risks.



Advanced Real-time Visualization

Sniffer4D Mapper software visualizes and analyzes data from one or more Sniffer4Ds in real time, providing intuitive & insightful information for decision makers.

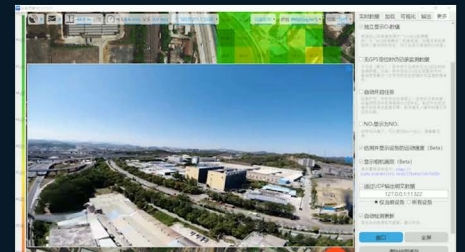
Real-time Data Analysis



Without Distance limitation



Real-time Drone Camera View

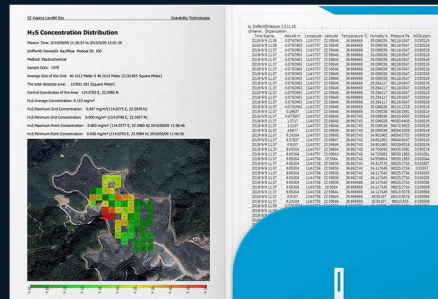


Advanced Real-time Visualization

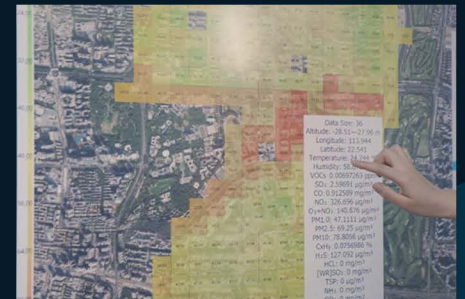


- 1 2D Isoline Map
- 2 2D Grid Map
- 3 3D Point Cloud

One-click Result Delivery



Historical Data Analysis



Typical Applications & Configurations



Flight Hub 2 Supported

Soarability

For more information:
www.soarability.com
inquiry@soarability.tech
www.linkedin.com/company/soarabilitytech/

60 PAYA LEBAR ROAD #11-53 PAYA LEBAR SQUARE
 SINGAPORE (409051)